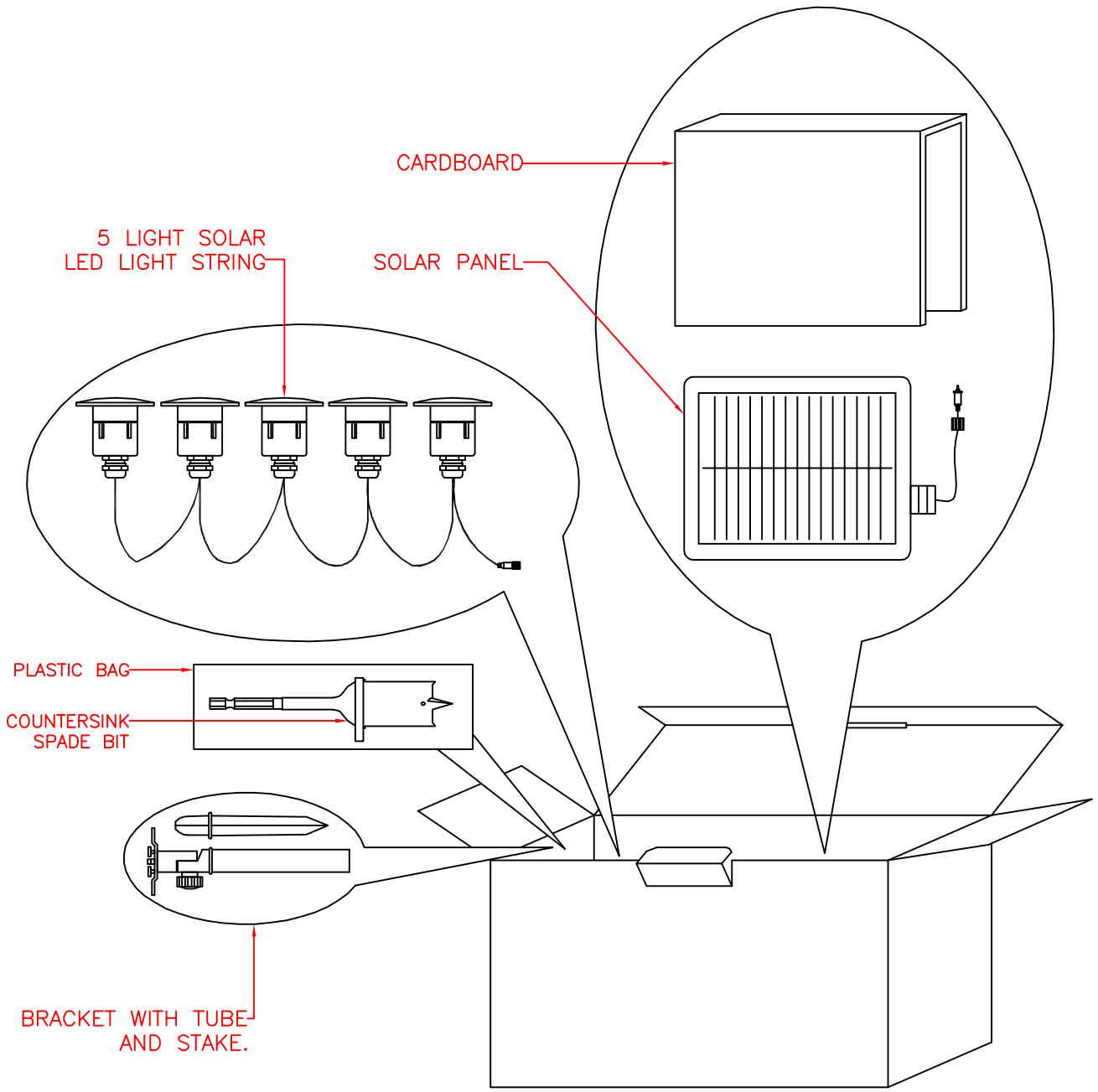


MODEL: 60503

PACKING DIAGRAM



MODEL: 60503

## ASSEMBLY INSTRUCTIONS

READ AND SAVE THESE INSTRUCTIONS

READ INSTRUCTIONS ALL THE WAY THROUGH PRIOR TO ASSEMBLY.

Assembly Time: 10 Minutes.

### UNPACK THE SOLAR LED LIGHT STRING

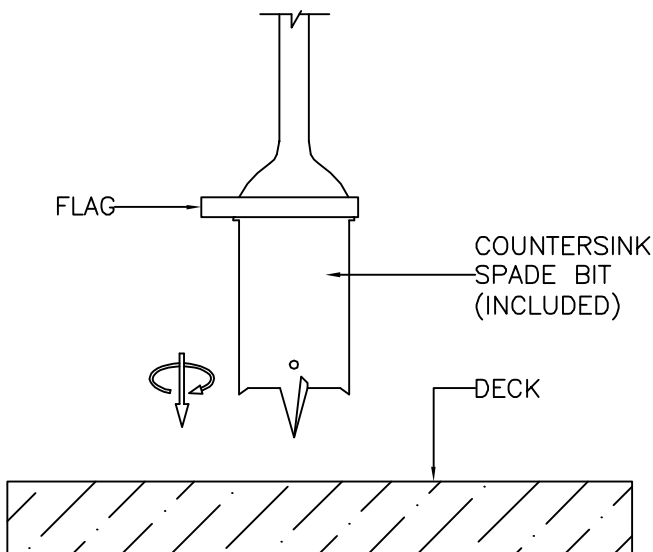
The following parts should be included in your solar light kits; (5) Solar LED Lights, (1) Solar panel, (1) Adjustable bracket and stake set, (1) Countersink Spade Bit.

### TOOLS

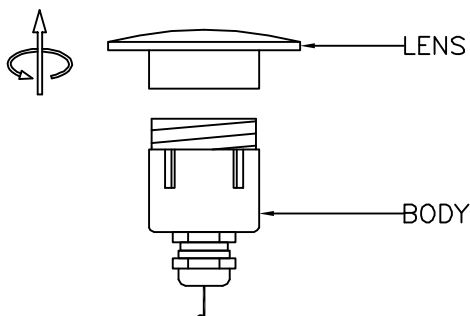
A drill will be required for deck or hard surface installation.

### DECK INSTALLATION

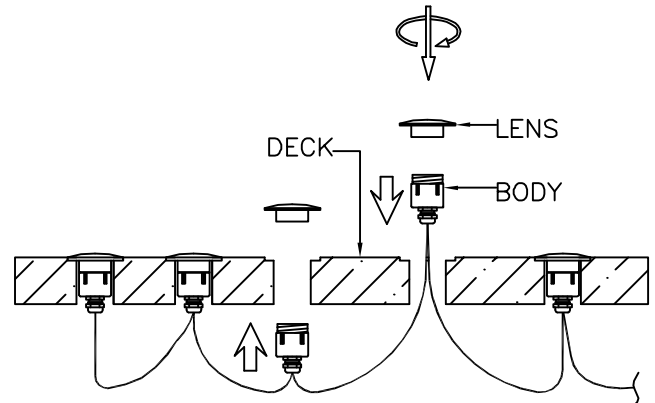
1.) Using your drill with the included spade bit, carefully drill through your deck, keep drilling until the flag touches the deck's surface.



2.) Remove the lens from the body.



3.) Slide the LED light body through the bottom of your deck.

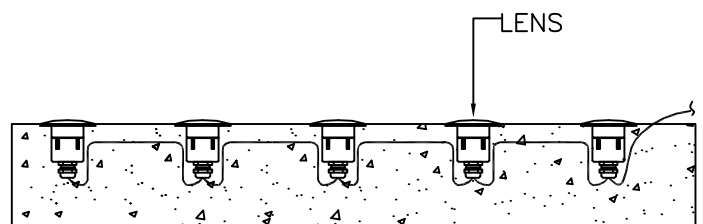


4.) Once through the hole, screw the lens to the body.

5.) Drop in place.

### GROUND INSTALLATION

Bury the Solar LED Light String bodies in grass, mulch, or gravel. You may wish to create a small trench between lights in order to conceal the cable.



### TIP:

Use your drill and the included spade bit for greater precision.

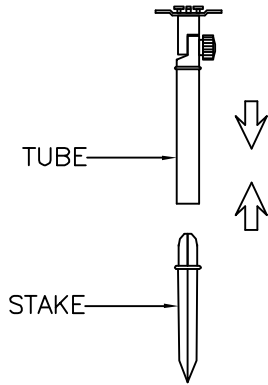
MODEL: 60503

# ASSEMBLY INSTRUCTIONS

READ AND SAVE THESE INSTRUCTIONS

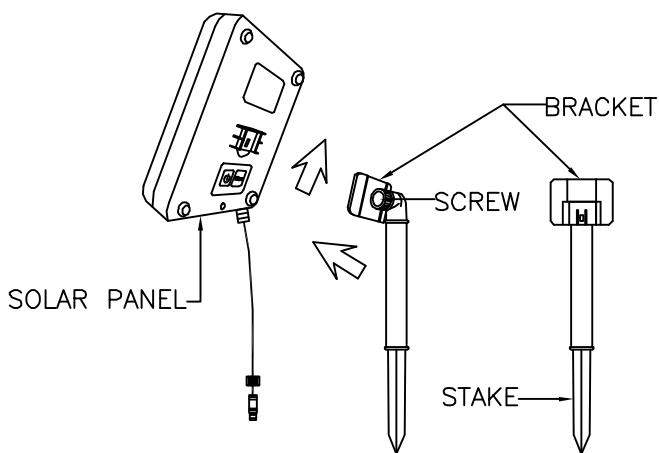
## PANEL ASSEMBLY AND INSTALLATION

1.) Push tube and stake together as shown below.

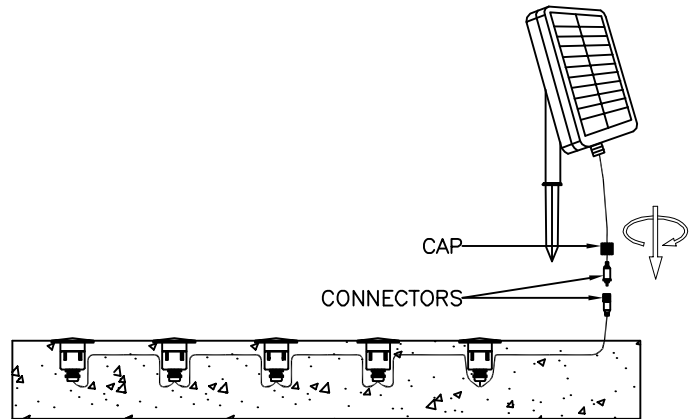


2.) Attach bracket to back of the solar panel. Position bracket & solar panel as shown below, where the tab is on the bottom of the bracket & the screw is on the same side as the power button on the solar panel, the bracket will lock on to the connector on the back of the solar panel by pressing the tab against the back of the panel & sliding the bracket upward, follow arrows on diagram.

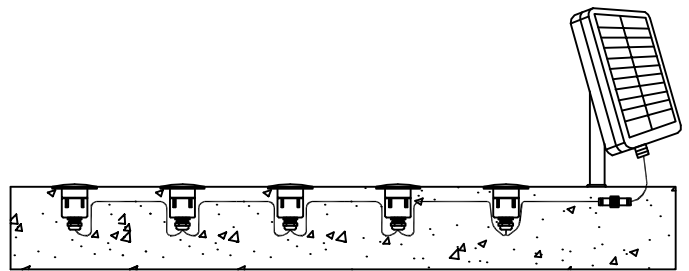
Note: You can adjust the angle of the solar panel by loosening the screw.



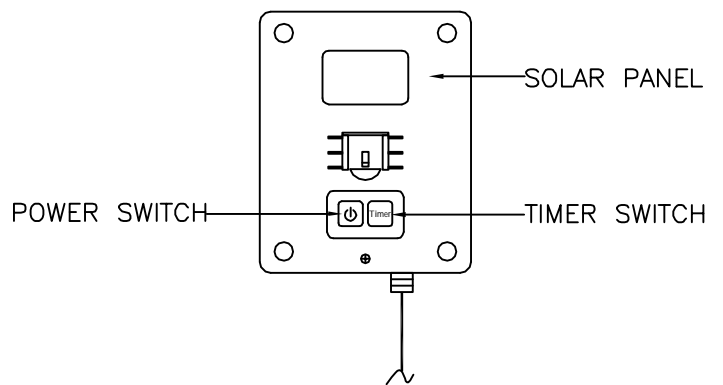
3.) Join the connectors and screw the cap tightly together.



4.) Insert the solar panel into the ground in a sunny area.



5.) Once charged for 6~8 hours, your LED Light String is ready for use. Press the power button on the back of the unit to turn the lights on.



**BACK VIEW**

MODEL: 60503

## ASSEMBLY INSTRUCTIONS

READ AND SAVE THESE INSTRUCTIONS

### SETTING THE TIME DURATION

1.) Press the timer button & watch for the number of flashes from the led light. The number of flashes indicates the number of hours that the light will stay on, on the last flash, the light will stay on and remain on for 1 hour per flash (4, 5, or 6 hours).

2.) The timer will remember what was set last and automatically come on at dusk until the timer is reset.

3.) Once the timer is set and the light is on, you may press the timer button again to select a different time, you may select from 4, 5, or 6 hours. Do not press button while the light is flashing, wait until it is on.

### ADJUSTMENT OF TIMER

1. Timer options: 4 hours, 5 hours and 6 hours.

2. Led light will flash to advise the selection that you have made.

a. 4 hour timer = 4 flashes.

b. 5 hour timer = 5 flashes.

c. 6 hour timer = 6 flashes.

### TROUBLE SHOOTING:

1.) If your Solar LED Light is not functioning properly or losing power mid-cycle, then ensure the solar panel is positioned in direct sunlight. Your solar panel will need to collect between 6 ~ 8 hours of sunlight to function throughout a full cycle.

2.) Check your connections to the solar panel - a loose or improperly connected cable will cause the LED Light String to malfunction.

3.) Although the battery inside your Seriously Solar panel is designed for maximum longevity, overtime performance will drop - replacing the battery will correct this issue.

### IMPORTANT NOTES:

1.) The led light will light for 4/5/6 hours each time (based on the timer you have chosen) after you turn on it.

2.) The led light will turn on automatically every night.

3.) If you want the led light work again after timer, press the power switch, timer will be recalled.

4.) When the led light is turned off manually, timing will be cancelled.

5.) Although there may be some initial charge in battery, we recommend fully charging it before first use. turn off the led light and leave the solar panel in good sunlight for 6 hours to ensure the batteries are fully charged.

6.) To maximize solar energy intake, the solar panel may be cleaned periodically with a soft rag and water, do not use chemical solvents.